

AYA NAGAR - DISTRESS MAP



1A. ENTRY TO AYA NAGAR



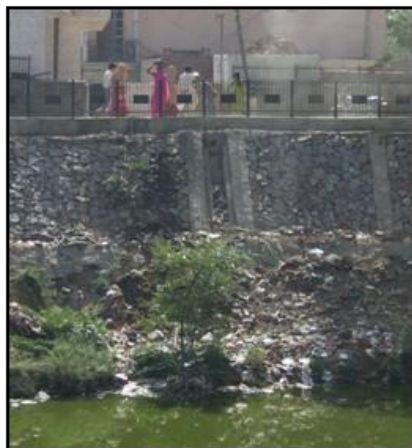
1B. THE ROAD ALONG THE JOHAR

Entry to Aya Nagar is through a narrow road with heavy traffic. The road between junctions 1A AND 1B has been closed 4 times in the last 10 months for 3-4 days in a row for repair work. It is the most important connection of Aya Nagar with the M.G road and frequent closure makes the traffic conditions unmanageable.



2. THE BUS TERMINUS

The location of the bus terminus adds to the chaos on the roads of Aya Nagar and creates more traffic jams on the crossing.



3.WASTE DISPOSAL IN THE JOHAR

The drains carrying solid waste, garbage and sewerage from Aya Nagar flows into the Johar, making it derelict.



4. LACK OF PROPER DRAINAGE



5.FILLING UP OF RAVINES

The ravines are being filled up and large scale construction activity is taking place.



6.JHUGGI ENCAMPMENT

Organised squatting (jhuggi encampment) on public / Gram Sabha land as on 19th April 2008.



7. The location of the transformer and the hump in the middle of the road creates traffic bottlenecks.



8. BUILDING MATERIAL SHOPS

These shops along the main roads and inner lanes create traffic problems and are safety and health hazards.